

Western Port Catchment  
Landcare Network Member

---

**BESSIE / ARARAT CREEK**  
**LANDCARE**

---



---

UPPER PAKENHAM  
NAR NAR GOON

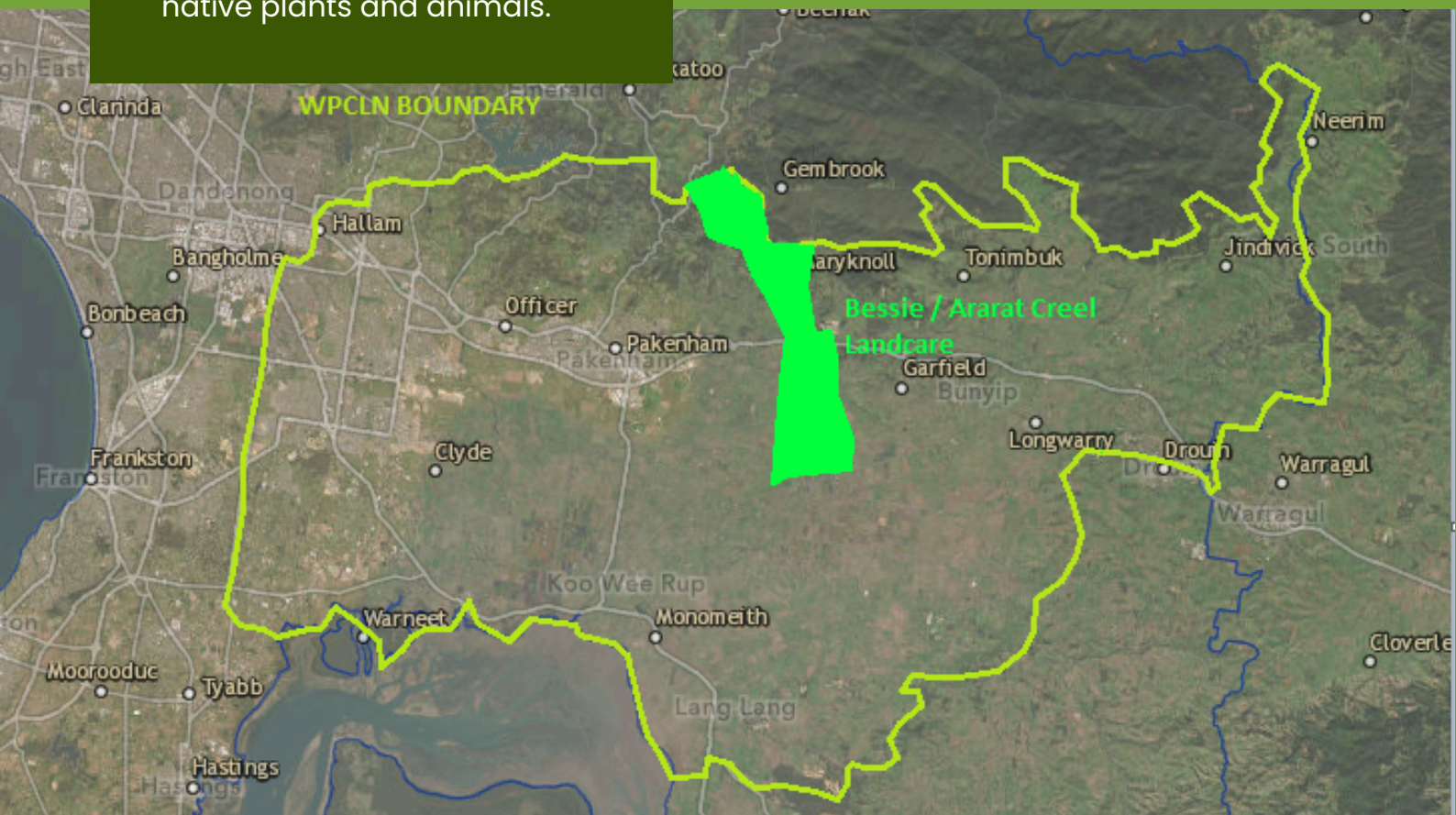
---

# L.I.F.E.

## ***Landcare Is For Everyone***

Our aim is to facilitate friendships and connections that enable our community to work together and protect our landscape. We believe that working together underpins success and the future of our native plants and animals.

*We're caring for the friendships and connections that keep our community and landscapes healthy.*



## ABOUT US

Established in 2000, we bring together local landholders from Pakenham Upper, Nar Nar Goon and Nar Nar Goon North, to protect native flora and fauna, and strengthen habitat connections across the landscape. Our group focuses on practical, hands-on activities like weed and pest animal control, along with bush care and tree planting.

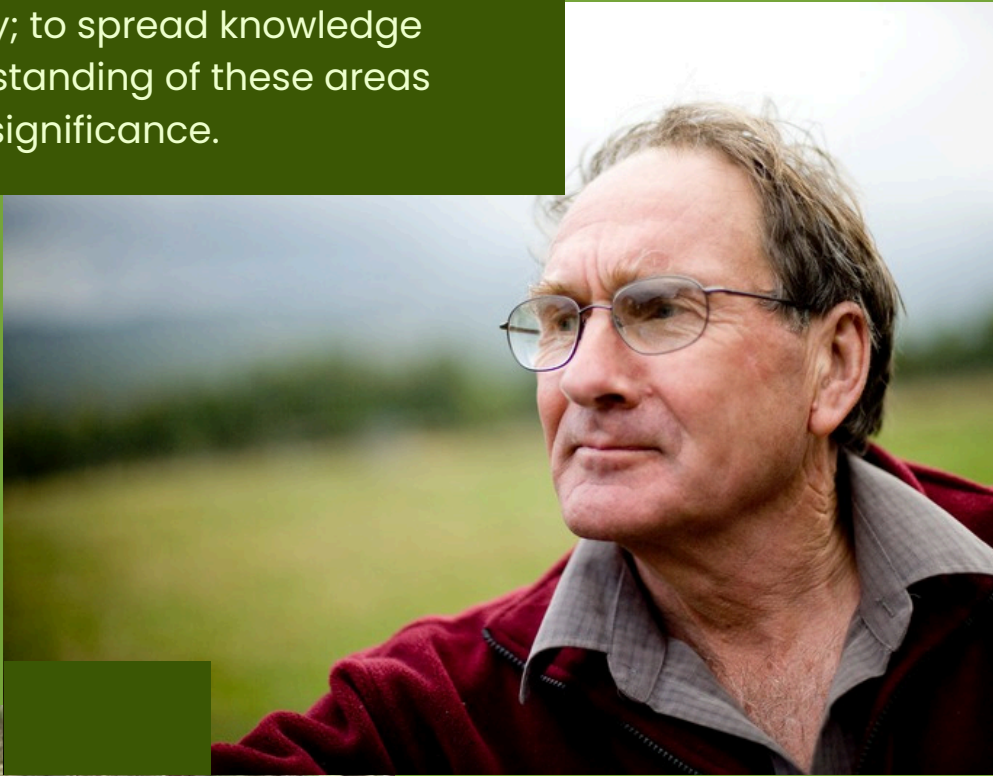
Community involvement is central to our approach, and our members work together on shared projects to grow and empower the next generation of land carers.



Planting bio links connects patches of remnant vegetation so that native wildlife can move across the landscape to find the food and shelter they need to survive. We partner with neighbouring Landcare groups to plant more.

One of our Group goals is to promote the natural treasures in our local environment to our local community; to spread knowledge and understanding of these areas of natural significance.

We believe that the Landcare ethos needs to reach and inspire future generations. We all have a responsibility to look after what we've inherited and leave it better for those who come next.



Raising awareness of and appreciation for the natural environment is as simple as getting kids involved in tree-planting. Our group fosters local stewardship by helping families take simple steps on their property to increase native vegetation and improve ecosystem health.

# KEEP IN TOUCH

Geoff Leed | Group Contact  
gpleed@bigpond.net.au

Join us on Facebook

