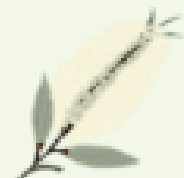


Western Port Catchment
Landcare Network Member



Cannibal Creek Catchment LANDCARE



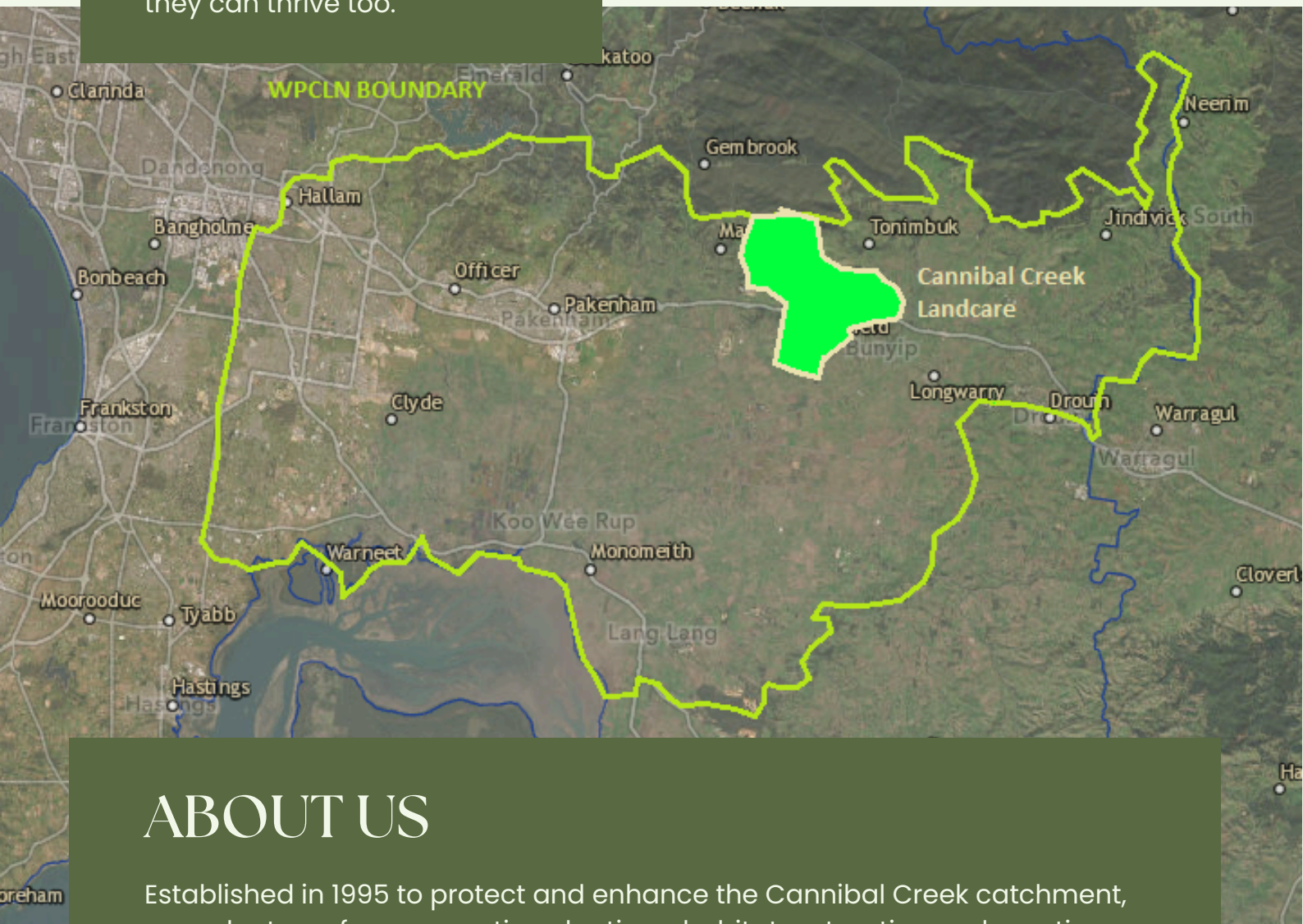
TYNONG - GARFIELD

L.I.F.E.

Landcare Is For Everyone

We're passionate about connecting habitat across the landscape so our remaining native wildlife can thrive, and connecting people with nature and others so they can thrive too.

We're caring for the connections that keep our landscape, native wildlife, soils, creeks and community thriving.



ABOUT US

Established in 1995 to protect and enhance the Cannibal Creek catchment, our volunteers focus on native plantings, habitat restoration and creating vegetation corridors across the landscape to help native wildlife move between patches of remnant habitat.

We collaborate with Melbourne Water, Cardinia Shire Council, Landcare Australia, and the Western Port Catchment Landcare Network to access grants, resources, training and technical support that helps our community care for the landscape.



Lovers Lane in Garfield is a hallmark restoration project of Cannibal Creek Landcare Group - where our volunteers have rehabilitated an old grazing area into a biodiversity hot-spot.

Our mission is to protect and enhance the Cannibal Creek catchment and its environment, and develop and maintain bio-links within the Cannibal Creek catchment.

Our volunteers work on both private and public land to restore native vegetation, manage invasive weeds and pest animals and establish farm windbreaks and shelter belts that support biodiversity.



Our members are community leaders who care greatly about passing on local knowledge and sharing resources including tools, water trailers and other landcare equipment. We've even been known to dig into dung to swap dung beetles across properties to improve soil and stock health.

KEEP IN TOUCH

cannibalcreeklandcare@gmail.com

Join us on Facebook

