

Western Port Catchment
Landcare Network Member

JINDIVICK LANDCARE



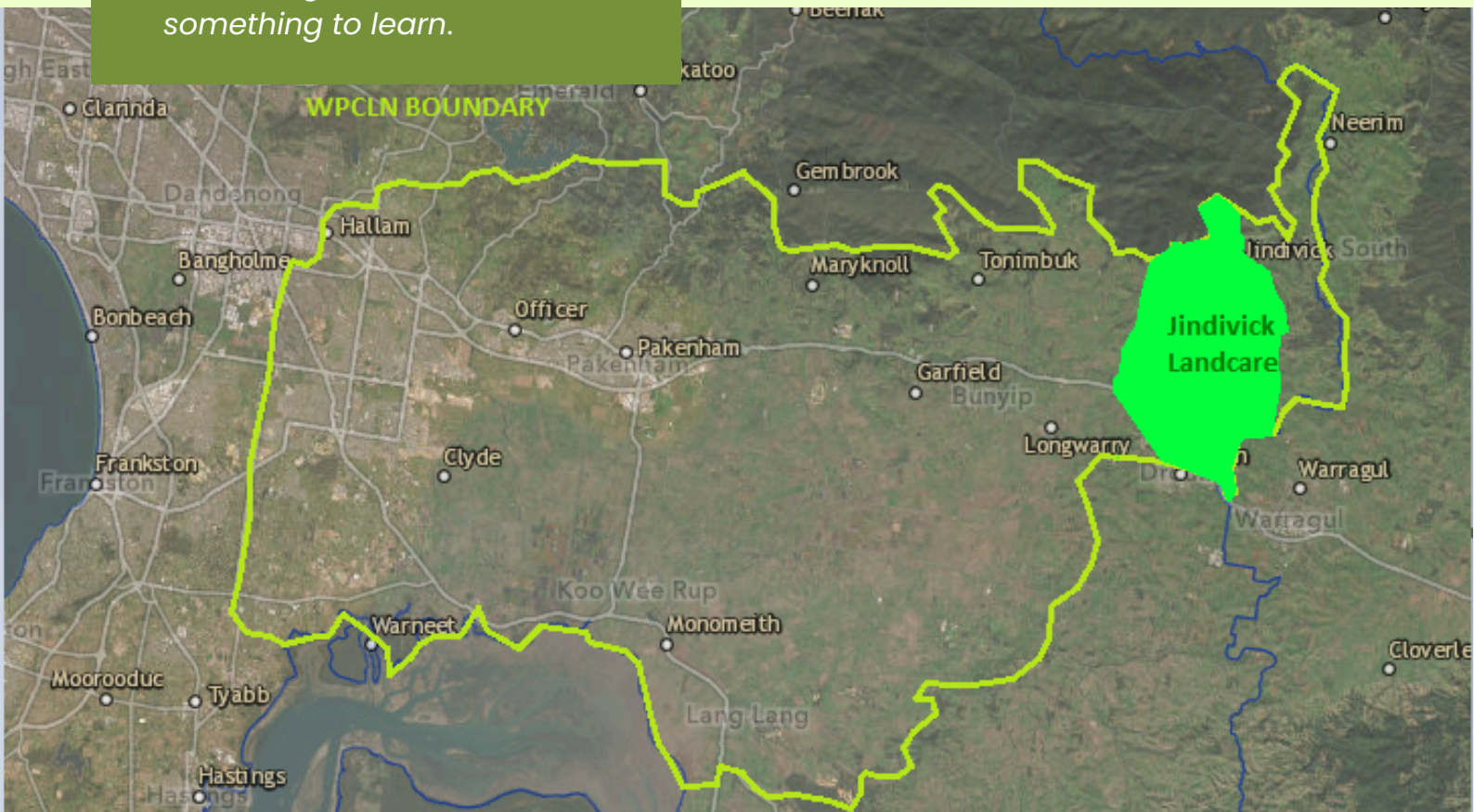
JINDIVICK – DROUIN

L.I.F.E.

Landcare Is For Everyone

Our aim is to connect with all landholders in our area and we welcome primary producers, hobby farmers and lifestylers. Our philosophy is simple – *Everyone has something to teach and something to learn.*

We're caring for the upper reaches of the Tarago catchment and critical platypus habitat.



ABOUT US

Established in 2005, the Jindivick Landcare Group promotes sustainable agricultural practices and environmental stewardship through community education, field days, tree plantings, and pest animal and weed management.

Our group collaborates with neighbouring Landcare groups (especially Labertouche and Neerim District Landcare groups), schools and local partners including the Western Port Catchment Landcare Network and Baw Baw Shire Council to strengthen landscape resilience.



Our region is not officially recognised as belonging to any one Traditional Owner group. We border Gunaikurnai, Wurundjeri and Bunurong lands, and we pay our respects to all of these groups, and their Elders, past, present and emerging.

Our area, located in the upper reaches of the Tarago River catchment, includes Drouin West, Drouin, Rokeby, Bravington and Neerim South.

Our events have included a rabbit management field day with the Victorian Rabbit Action Network, and the *Hunt for the Giants* – a community led, big-tree survey.



Located in a high-rainfall dairy region with rolling pasture and pockets of native bushland, our group helps protect significant species such as the threatened Stzrelecki Gum, and platypus habitat along the Tarago River and its tributaries.

KEEP IN TOUCH

Helen Barclay | President
jindivicklc@gmail.com

