

Western Port Catchment  
Landcare Network Member

# TOOMUC VALLEY LANDCARE



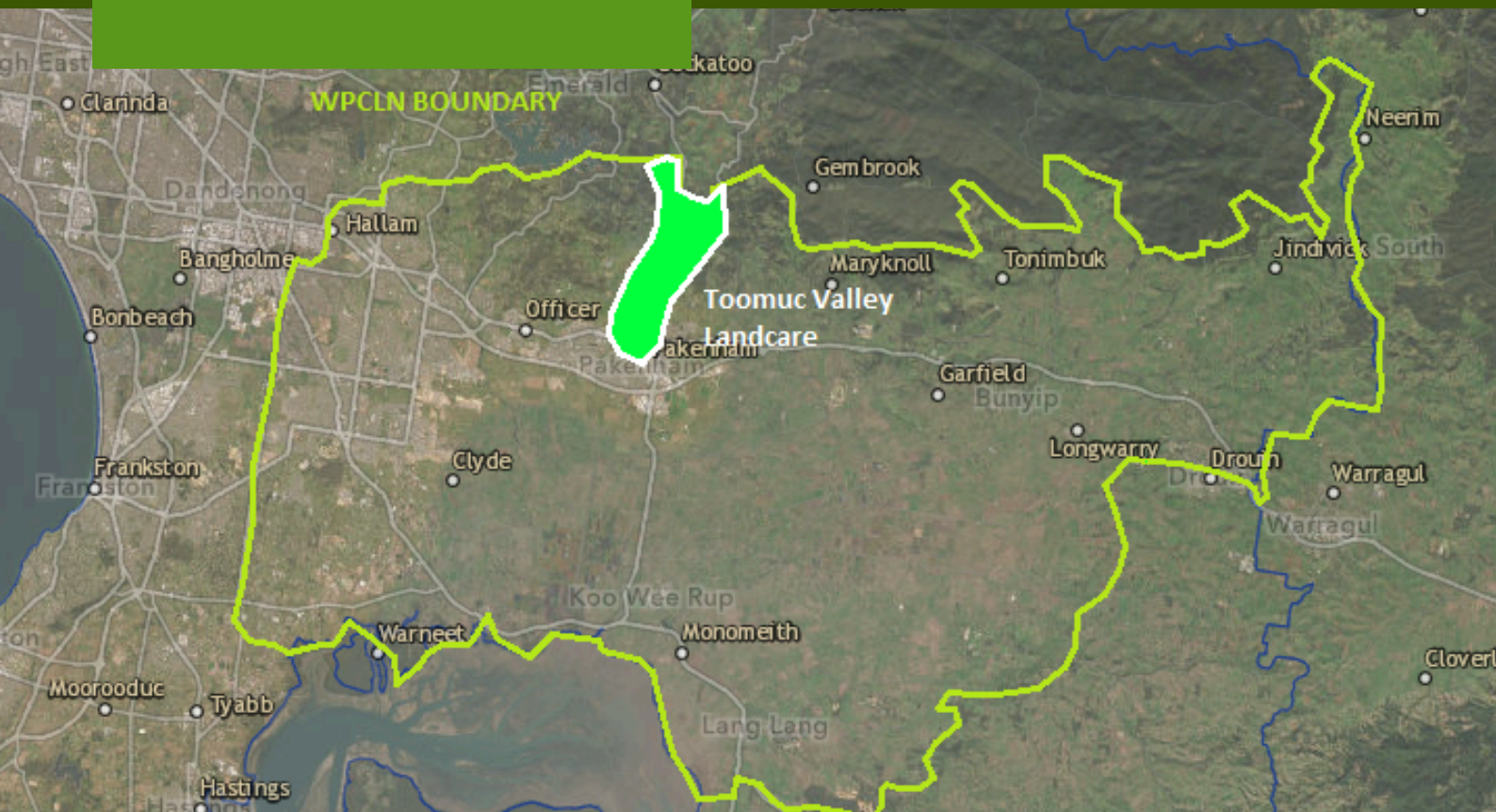
TOOMUC VALLEY  
NAR NAR GOON  
UPPER PAKENHAM

# L.I.F.E.

*We're passionate about Lyrebird surveys which help monitor population distribution and health.*

## ***Landcare Is For Everyone***

We focus on practical conservation work and community engagement to promote collaborative stewardship and protect biodiversity in the Toomuc Valley.



## ABOUT US

Our group works to protect and enhance natural environments across the Toomuc Valley, including the R.J. Chambers Reserve and areas along Toomuc Creek. Our group is well known for its long-running Lyrebird surveys which monitor local territories and population health of this incredible bird.

We also focus on habitat restoration through the removal of invasive weeds and pest animals, replanting of native species and nest box installation for possums and sugar gliders.



Our volunteers actively remove and help others control and manage blackberry and invasive grasses from the landscape. These weeds quickly invade and overtake native plants which provide vital food and homes for native animals.

Toomuc Valley Landcare areas of interest include Toomuc Creek, R.J. Chambers Reserve, Cardinia Aqueduct Trail, Beaconsfield Reservoir and surrounding natural areas.

Helping landholders control fox and feral cat populations is an important part of our work. These nocturnal predators decimate our local wildlife and pose a significant threat to Lyrebirds.



Toomuc Valley Nature Reserve is one of our project sites. In partnership with local landholders, Western Port Catchment Landcare Network, Melbourne water and the Cardinia Shire, we've been able to transform degraded lease-land back into natural habitat.

# KEEP IN TOUCH

Email Joy Carberry | Secretary  
[joy@i.net.au](mailto:joy@i.net.au)

[www.toomuclandcare.com.au](http://www.toomuclandcare.com.au)

